

# Recycle Coach Composting Activity Packet

Ages 9-12



Download the  
app today



SCAN ME

Follow Us



[www.recyclecoach.com](http://www.recyclecoach.com)



# Sort the Items

Directions: Sort what items can go in your compost by circling them.  
(arrows indicate two separate items to sort)



# Draw an Upcycle

**Directions:** Recycling can be more than just putting the correct items in the bin. Upcycling is a way to do your own recycling. Upcycling is taking an item you no longer need and turning it into something new to be used again in a different way. This is a great way to keep non-recyclable items out of landfills. An example of this would be using an old boot as a decorative flowerpot in your garden.

**Example:**



**Brainstorm your own ideas here:**

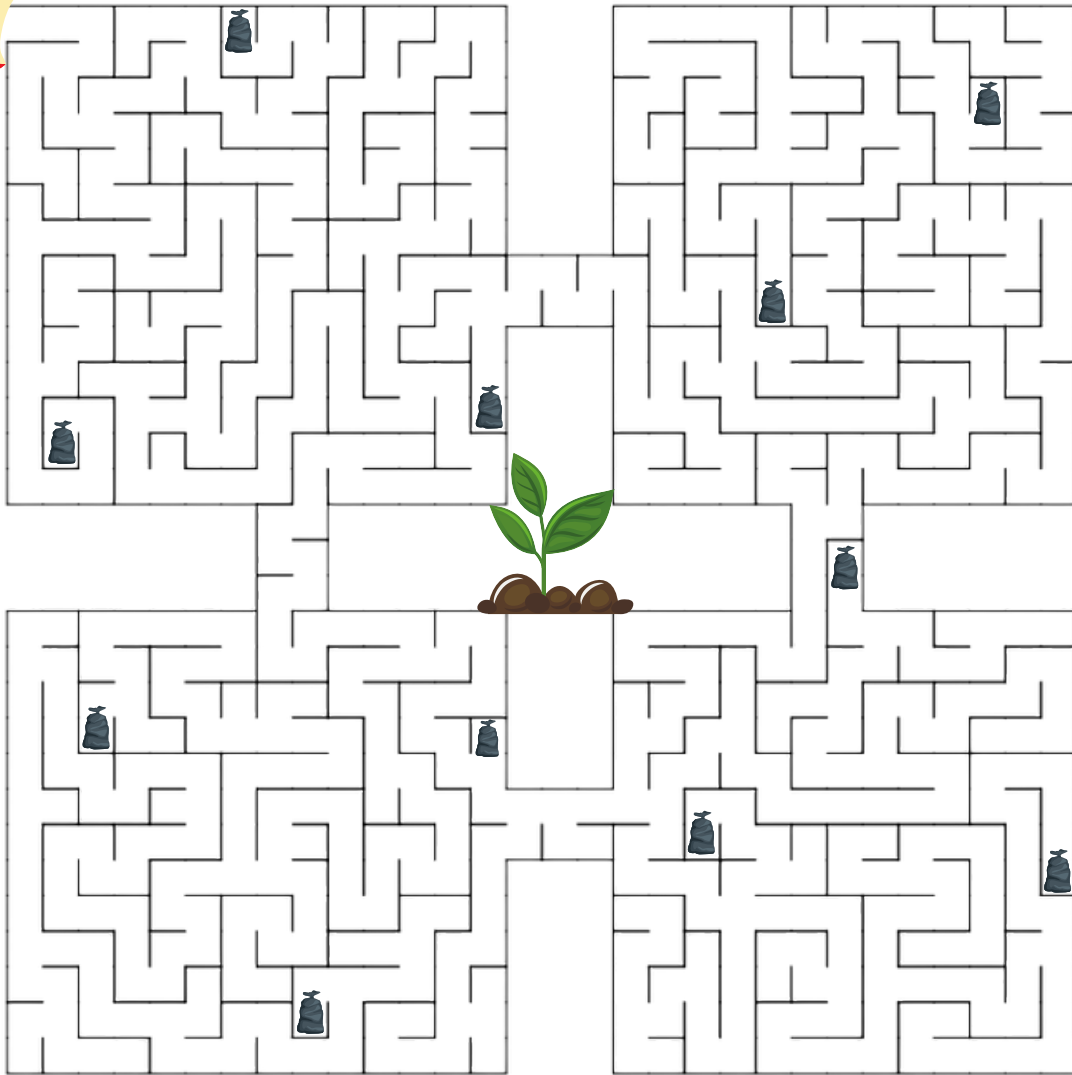
- 
- 
- 

**Draw your own upcycle idea from your list above:**



# Maze

Directions: Can you get the apple through the maze and to the compost? If you've reached a garbage bag, you've gone the wrong way!





# Reduce Your Waste

Directions: For each comparison, circle the most sustainable choice that will use less waste.

1

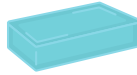


plastic water bottle



reusable water bottle

2



solid bar shampoo



shampoo in a bottle

3



reusable/washable straw



plastic disposable straw

4



disposable plastic bag

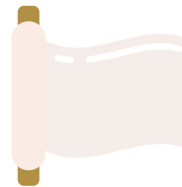


recyclable paper bag



reusable bag

5



plastic wrap for food storage



reusable containers for food storage

6



composting food waste



food waste in garbage

7



buying used clothes at thrift stores



buying newly produced clothes



# Cryptogram Message

Directions: Use the given key to decipher the sentence below.

## Key

A	B	C	D	E	F	G	H	I	J	K	L	M
12	6	20	5	14	16	10	24	22	11	3	4	19

N	O	P	Q	R	S	T	U	V	W	X	Y	Z
9	13	15	23	1	7	17	18	26	2	25	8	21

1 14 20 8 20 4 14 8 13 18 1

16 13 13 5 2 12 7 17 14 6 8

20 13 19 15 13 7 17 22 9 10

12 17 24 13 19 14



# Trivia

**Directions:** Answer the trivia questions below then check your answers in the answer key on page 10.

- Nearly \_\_\_\_\_ of food produced for people to eat is wasted each year.
  - 1/8
  - 1/3
  - 1/2
- Recycling 1 ton of paper can save how many trees?
  - 3 trees
  - 11 trees
  - 17 trees
- How many plastic bottles make it to recycling facilities? (The rest become litter or are landfilled.)
  - 29%
  - 52%
  - 86%
- Food waste sitting in landfills emits high levels of which kind of dangerous gas that is harmful to our atmosphere?
  - Nitrogen
  - Methane
  - Carbon Dioxide
- How much produce grown for consumption is thrown away each year because it is considered "too ugly" for retail?
  - 5%
  - 10%
  - 20%
- Plastic is made from which of these resources?
  - Oil
  - Soy
  - Coal





# Start a Compost

Help recycle your food waste as compost!

Composting is all about finding the right balance of ingredients. Using water, air, sunlight, green materials, and brown materials, you can start producing rich topsoil that'll give your garden a natural boost.

Brown materials are any carbon-rich matter and green materials are any nitrogen or protein-rich matter. There should be about two to four parts brown material to every one part green material. Adding even more brown material will eliminate the odor, but too much brown materials will slow down the process.

Be sure to keep your compost moist like a sponge. Break down materials as small as possible before adding them. Turn the pile regularly to make sure all parts get enough air. The perfect pile shouldn't stink. It should smell like soil. And when it's done composting, it'll look like chocolate cake.

## GREEN MATERIALS

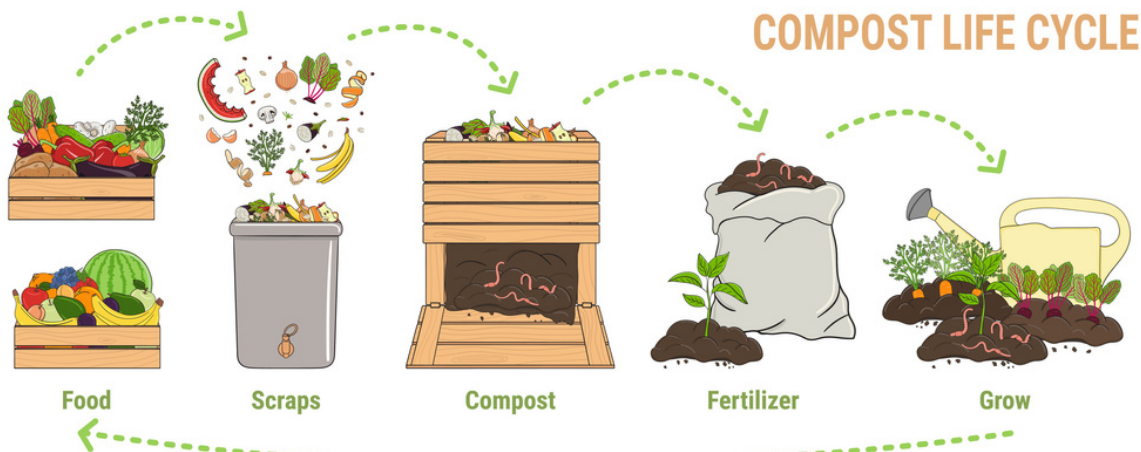
- Fruit and vegetable scraps
- Coffee grounds and teabags
- Fresh leaves and plants
- Grass clippings
- Other organic kitchen waste

## BROWN MATERIALS

- Breads and grains
- Nutshells and egg shells
- Shredded newspaper
- Dead leaves
- Twigs and small branches

## DO NOT COMPOST

- Fats, grease, or oils
- Dairy products, meat, or fish
- Pet waste or litter
- Yard waste with pesticides
- Coal or ashes

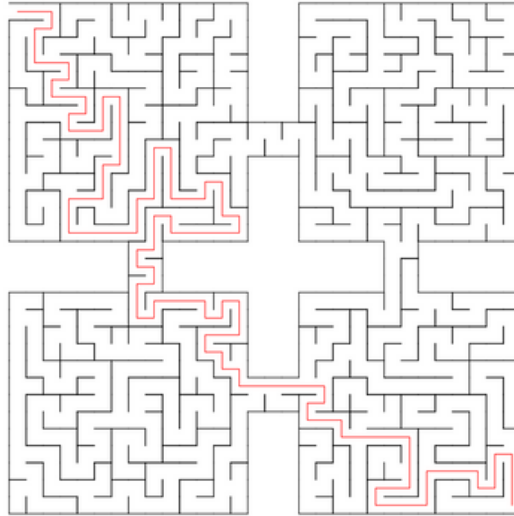




# Answer Key

\*\*\* Each recycling program is unique in what it accepts, therefore any activity that asks you to look up items in the 'What Goes Where' search tool will not have answers provided in this answer key. The correct answer for each item are searchable on the Recycle Coach Mobile App.

4



5



# Answer Key

6

R E C Y C L E      Y O U R  
F O O D      W A S T E      B Y  
C O M P O S T I N G  
A T      H O M E

7

- |   |   |   |   |
|---|---|---|---|
| 1 | B | 2 | C |
| 3 | A | 4 | B |
| 5 | C | 6 | A |



We want to hear from you and help you recycle better!  
Send your feedback and suggestions about this packet to

[education@recyclecoach.com](mailto:education@recyclecoach.com)



Recycle Coach is committed to enhancing your recycling knowledge through many fun educational activities on our app. **Download the app today and see what you can learn.**